

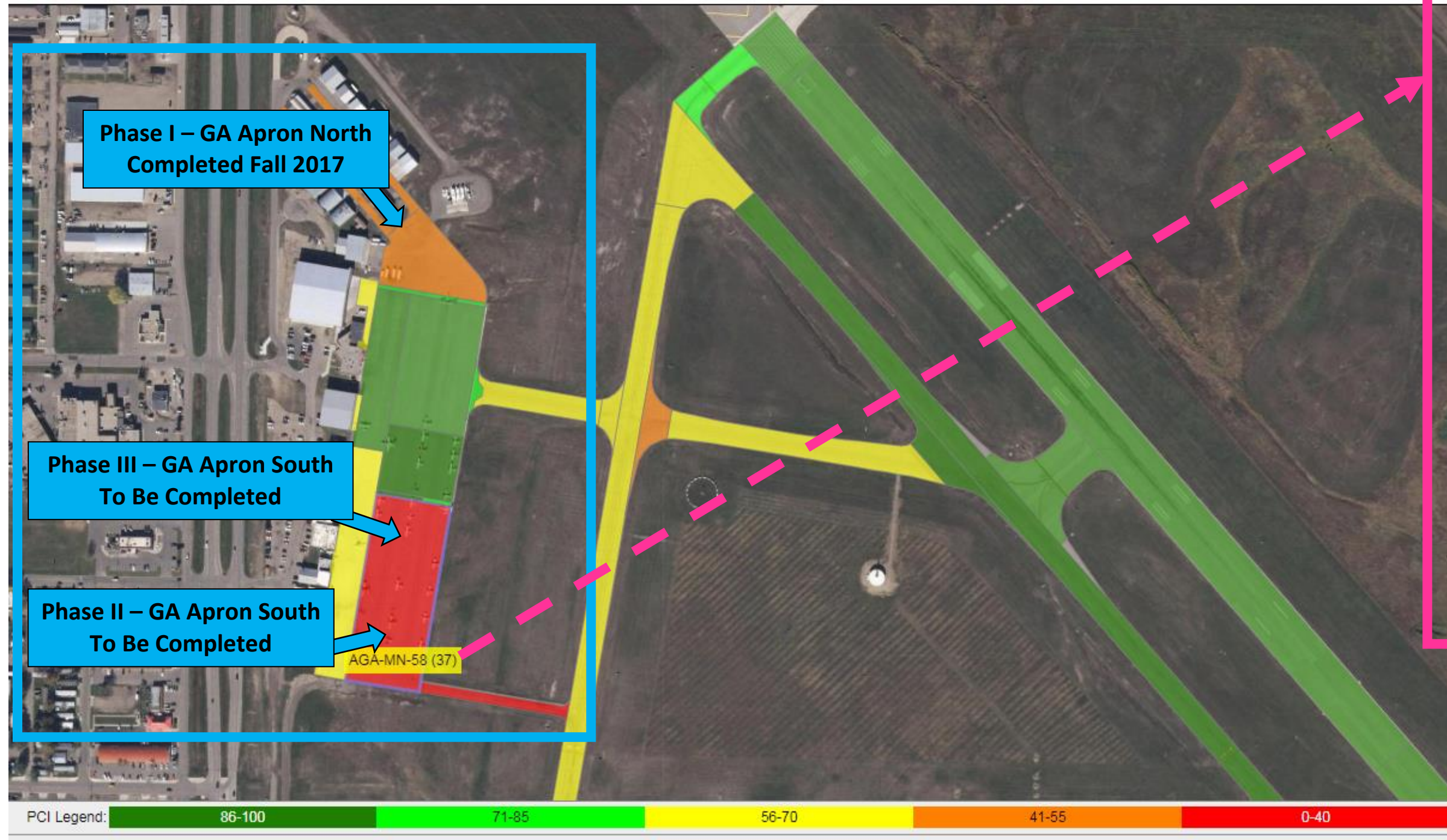
GA APRON PROJECT AREAS PHASE I, II, III



Aeronautics Commission
 ment System Update

Guidelines | Pavement Inspection | Other Studies | Miscellaneous

M&R | Inspection Comments | Documents | PCN | Summary Data



Details | Photos | Section PCI | Work | PCI vs Year

Branch Section: **AGA-MN-58**

PCI: 37
 Surface: AC
 Area: 152,670 sf
 Last Major M&R: 8/1/1995
 Last Inspection Date: 9/25/2015
 % Deduct/Load: 33
 % Deduct/Climate: 55
 % Deduct/Other: 12

Distresses (9/25/2015)

Distress	Quantity
Alligator Crk. (L)	123 sf
Alligator Crk. (M)	4,762 sf
Block Crk. (L)	14,774 sf
Depression (L)	813 sf
Depression (M)	1,010 sf
L & T Crk. (H)	1,473 ft
L & T Crk. (L)	4,679 ft
L & T Crk. (M)	5,910 ft
Oil Spillage	98 sf
Raveling (L)	7,387 sf
Weathering (L)	152,570 sf