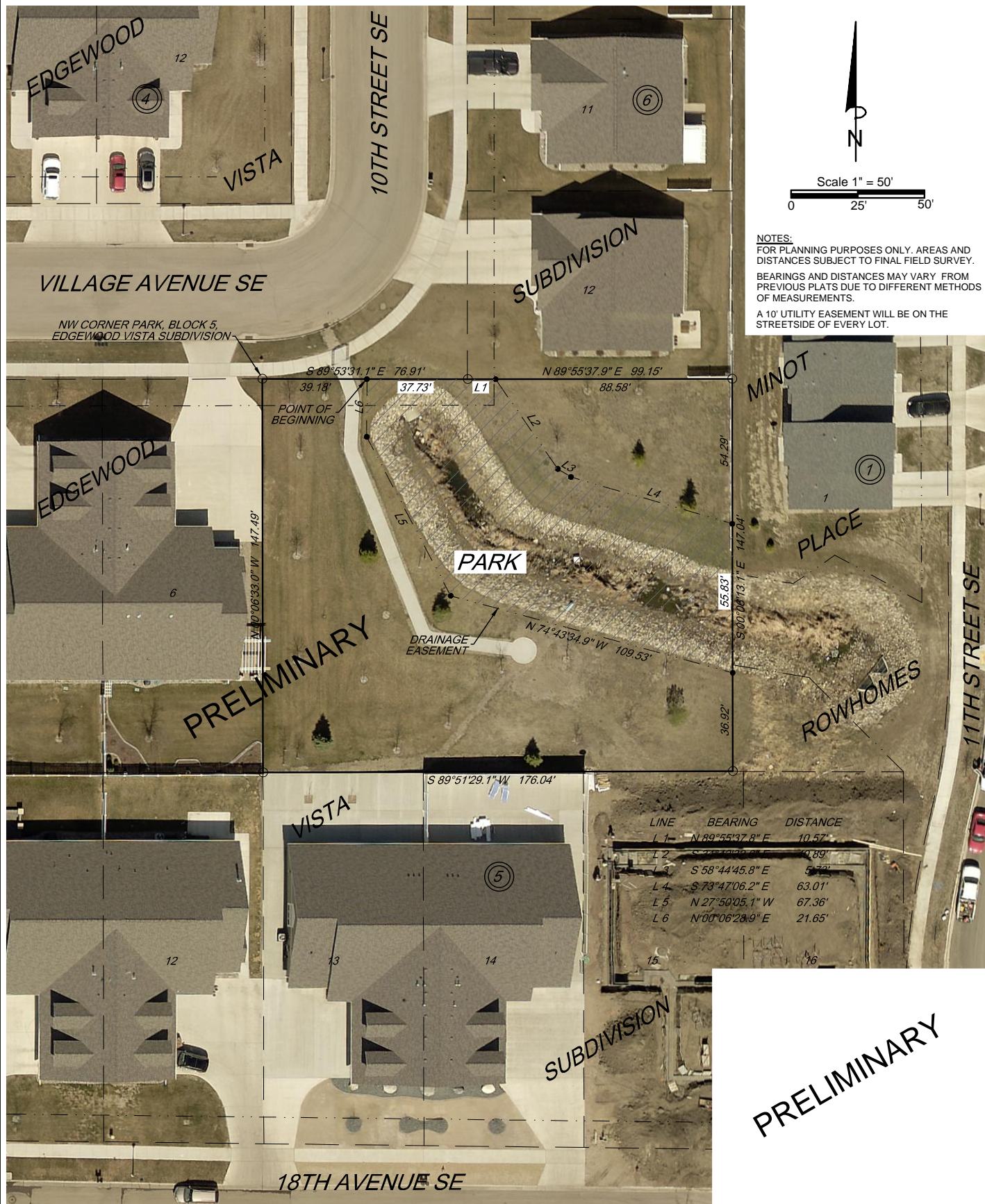


EXHIBIT "A" DRAINAGE EASEMENT

(PORTION OF PARK IN BLOCK 5, EDGEWOOD VISTA SUBDIVISION
TO THE CITY OF MINOT, NORTH DAKOTA)



NOTES:
FOR PLANNING PURPOSES ONLY. AREAS AND DISTANCES SUBJECT TO FINAL FIELD SURVEY.
BEARINGS AND DISTANCES MAY VARY FROM PREVIOUS PLATS DUE TO DIFFERENT METHODS OF MEASUREMENTS.
A 10' UTILITY EASEMENT WILL BE ON THE STREETSIDE OF EVERY LOT.

A Drainage Easement lying within a portion of Park, Block 5, Edgewood Vista Subdivision to the City of Minot, North Dakota which is more particularly described as follows; Commencing at the Northwest Corner of Park in Block 5, Edgewood Vista Subdivision to the City of Minot, North Dakota, a plat on record at the Ward County Recorders Office; Thence S 89°53'31.1" E, a distance of 39.18 feet to the point of beginning; Thence continuing S 89°53'31.1" E, a distance of 37.73 feet; Thence N 89°55'37.9" E, a distance of 10.57 feet; Thence S 34°42'32.6" E, a distance of 40.89 feet; Thence S 58°44'45.8" E, a distance of 5.73 feet; Thence S 73°47'06.2" E, a distance of 63.01 feet; Thence S 00°06'13.1" E, a distance of 55.83 feet; Thence N 74°43'34.9" W, a distance of 109.53 feet; Thence N 27°50'05.1" W, a distance of 67.36 feet; Thence N 00°06'28.9" E, a distance of 21.65 feet to the point of beginning.
Tract contains 8389.35 sq.ft. or 0.19 acres.



ACKERMAN SURVEYING
& ASSOCIATES

(701) 838-0786
1907 17TH ST SE, MINOT, N.D. 58701