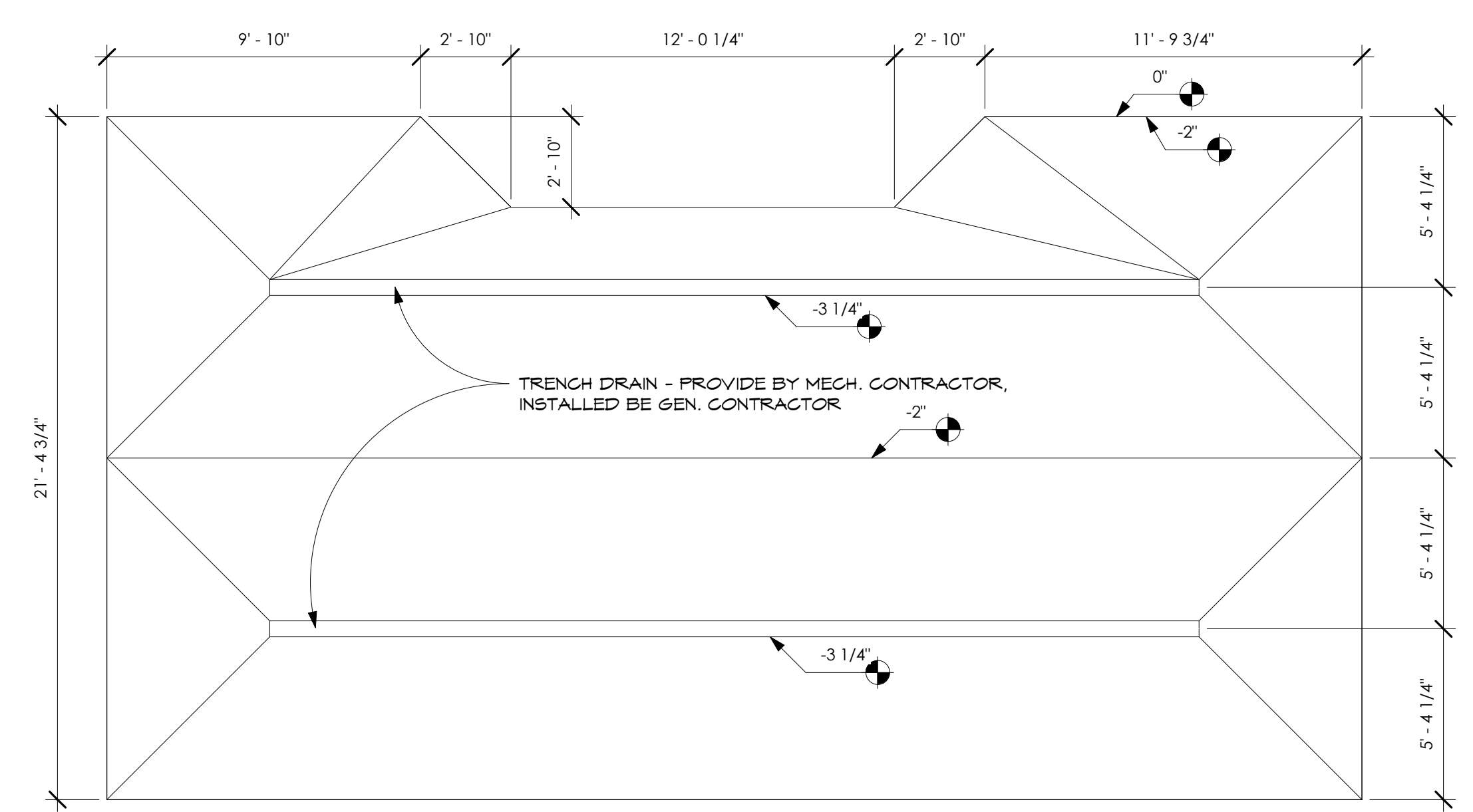


GENERAL FLOOR PLAN NOTES:

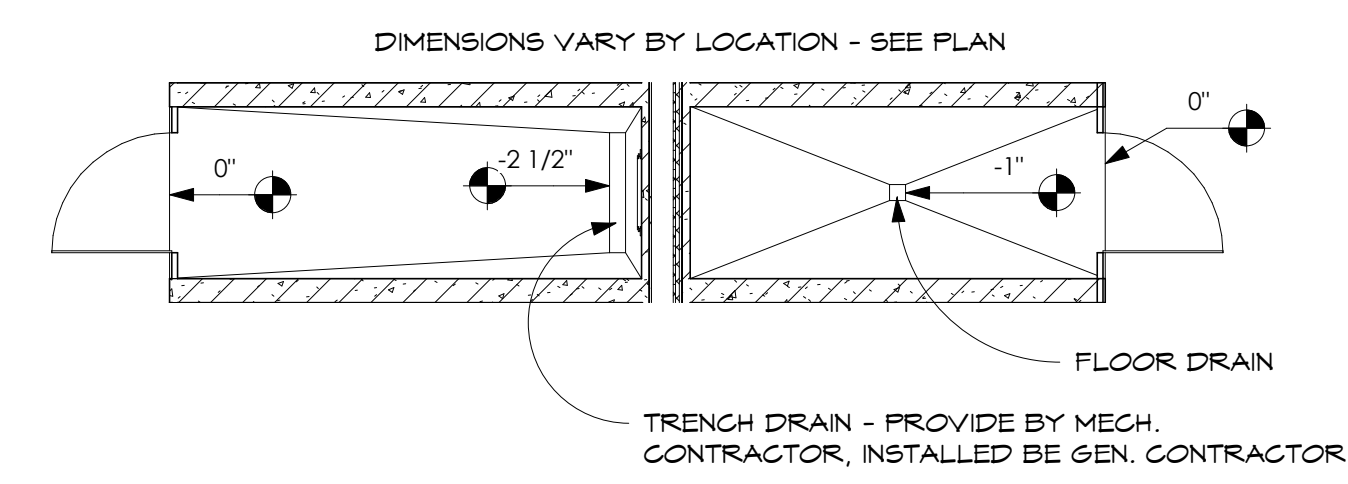
- GENERAL CONTRACTOR TO PROVIDE 4" CONCRETE HOUSEKEEPING PADS FOR MECHANICAL EQUIPMENT INCLUDING HEAT PUMPS, WATER HEATER, AND AIR EXCHANGER. SEE MECHANICAL PLANS FOR LOCATIONS.

- ADDITION: TOP PRIORITY AREAS
- ADDITION: SHELLED AREAS
- RENOVATION: EXTERIOR IMPROVEMENTS & INTERIOR SHELL; NO CASEWORK

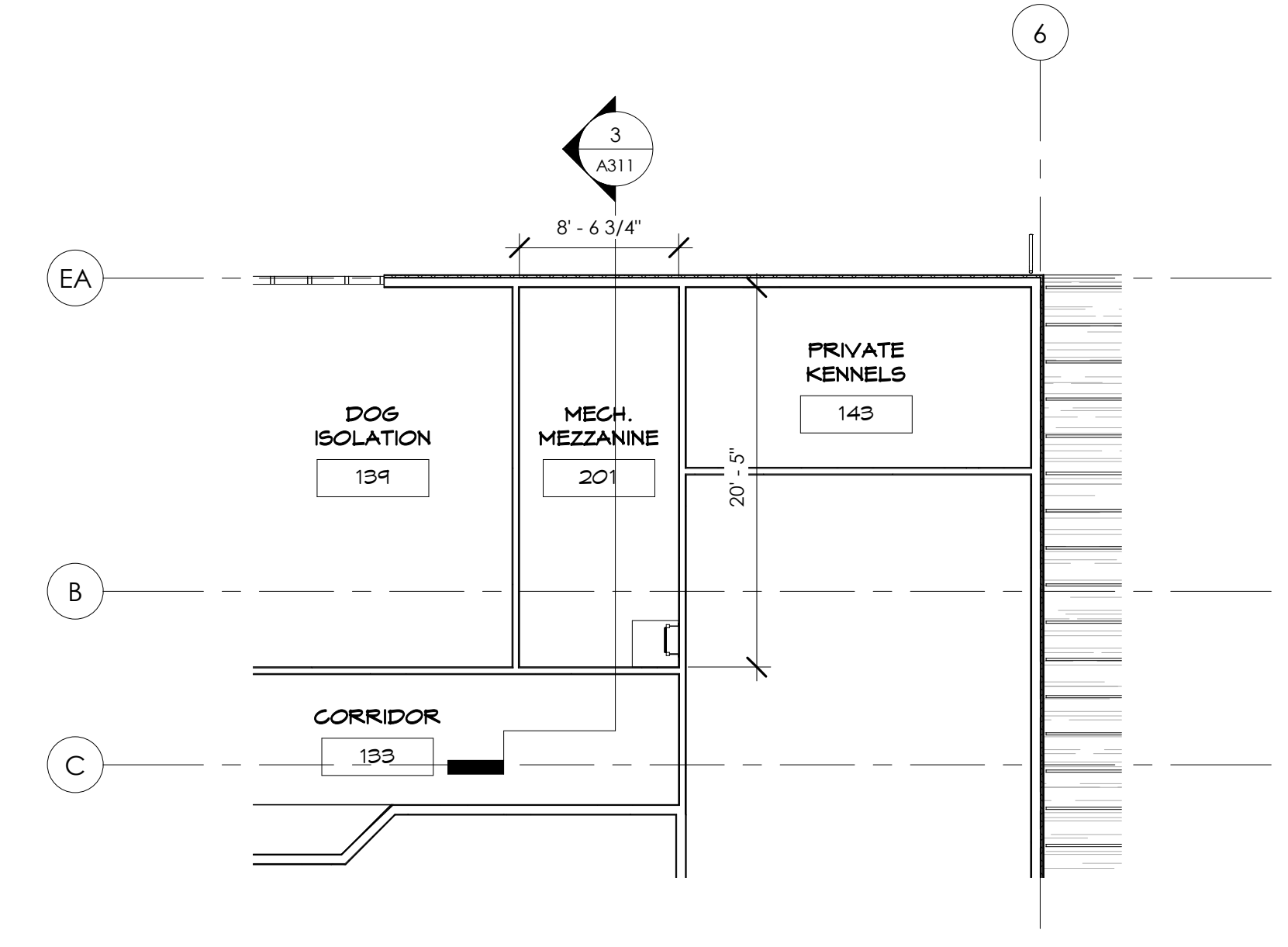
1 MAIN LEVEL FLOOR PLAN
A111 1/8" = 1'-0"



3 K9 GRASS RECESSED FLOOR PLAN
A111 1/4" = 1'-0"



4 KENNEL FLOOR SLOPE PLAN - TYP.
A111 1/4" = 1'-0"



2 MEZZANINE FLOOR PLAN
A111 1/8" = 1'-0"

I hereby certify that this plan specification, or report was prepared by me or under my direct supervision, and that I am a duly registered architect under the laws of the State of North Dakota.
DATE: 2/13/20 REG. NO. 1774

**SOURIS VALLEY ANIMAL SHELTER
ADDITION & RENOVATION**
MINOT, NORTH DAKOTA

DRAWN BY: KRK
CHECKED BY: RMA

2.13.2020

REVISION #	DATE

PROJECT #: R19089

FIRST FLOOR PLAN