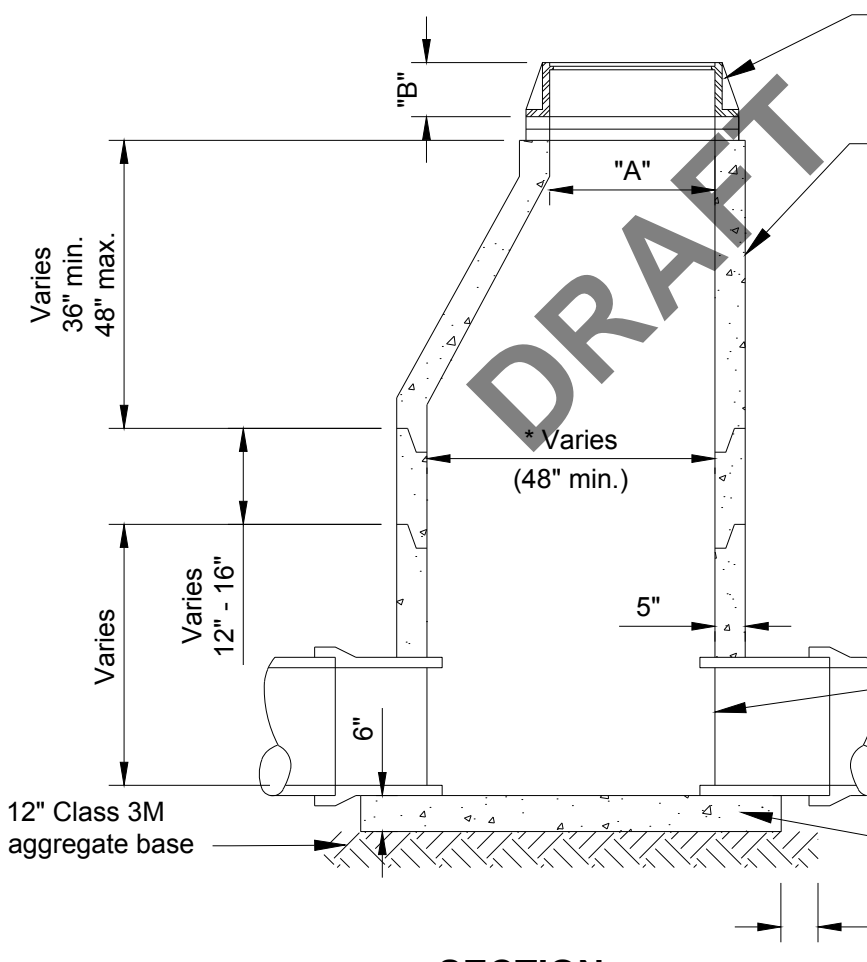


Grout bottom of manhole to 1/2 Ø at pipe and slope grout 2" toward outlet.

Casting	Lid Type	A	B
1642	B	27"	7"

**PLAN**



Neenah frame and cover or equal lettered "STORM SEWER", with 2 concealed pick holes Type F.

Adjustment rings per STR-1 detail. Orient cone so opening is above outlet.

Notes:

1. Doghouses shall be grouted on both the inside and outside.
2. Precast concrete sections only. No block structures are allowed.
3. Rubber O-ring or premium butyl rubber gasket on all riser section joints.

4" max. protrusion at pipe spring line, doghouses shall be grouted on both the inside and outside.

Minimum slab thickness is 6" for 14' depth. Increase thickness 1" for every 4' of depth greater than 14' and reinforce with 6" x 6" mesh.

**SECTION**

\*Determined by pipe size.

C:\Users\skennard\Desktop\MINOT DETAIL\STORM SEWER MANHOLE.dwg

City Plate No.:  
STO-1  
Last Revision:  
4/10/2019  
File:  
STO\_1.dwg

**STANDARD DETAILS  
STORM SEWER  
MANHOLE**

