

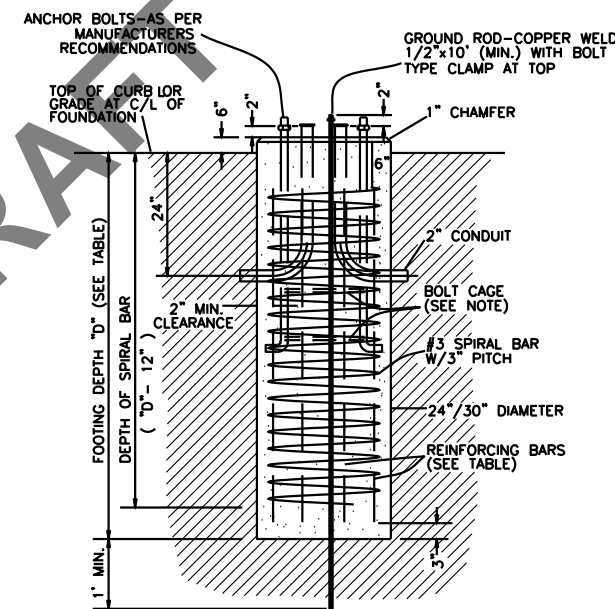
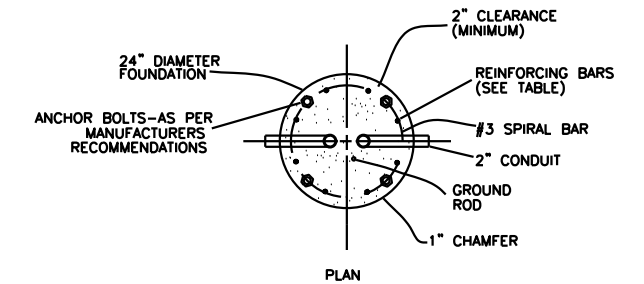
TRAFFIC SIGNAL STANDARD FOUNDATION SELECTION TABLE		
DESCRIPTION	24" DIAMETER REINFORCING BARS REQUIRED	24" DIAMETER FOOTING DEPTH "D"
TYPE V PED. FLASHER	4-#5 ①	4'

- NOTES:**
- NO REINFORCEMENT IS REQUIRED IF THE ANCHOR BOLTS EXTEND TO WITHIN 3" TO 6" ABOVE THE BOTTOM OF THE FOUNDATION.
  - ALL REINFORCING STEEL TO BE GRADE 40 OR 60.
  - SEE PLANS FOR CORRECT LOCATION OF FOUNDATIONS. THE GRADE AND EXACT LOCATION SHALL BE ESTABLISHED BY THE ENGINEER IN THE FIELD.
  - MAXIMUM BOLT CIRCLE FOR THE 24" FOUNDATION SHALL NOT EXCEED 18".

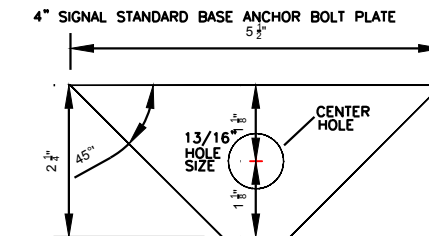
**CONCRETE FOUNDATION:**

- CONCRETE USED IN THE WORK SHALL BE CLASS AE PORTLAND CEMENT CONCRETE MIXED AND PROPORTIONED AS SPECIFIED IN SECTION 802.

**NOTE:**  
 THE TOP OF THE FOUNDATION SHALL BE CIRCULAR.



ELEVATION  
 24" DIA. FOUNDATION  
**SOLAR SCHOOL  
 FLASHER FOUNDATIONS**



- NOTES:**
- CUT FROM 1/4" WIDE GALVANIZED STEEL
  - THIS PLATE SHALL BE INSTALLED BETWEEN THE BASE AND THE ANCHOR BOLT NUT IN ALL 4" TYPE V SIGNAL STANDARD BASES.

City Plate No.:  
 TRA-8

Last Revision:  
 4/18/2019

File:  
 TRA-8.dwg

**STANDARD DETAILS  
 SOLAR SCHOOL  
 ZONE FLASHER**

