

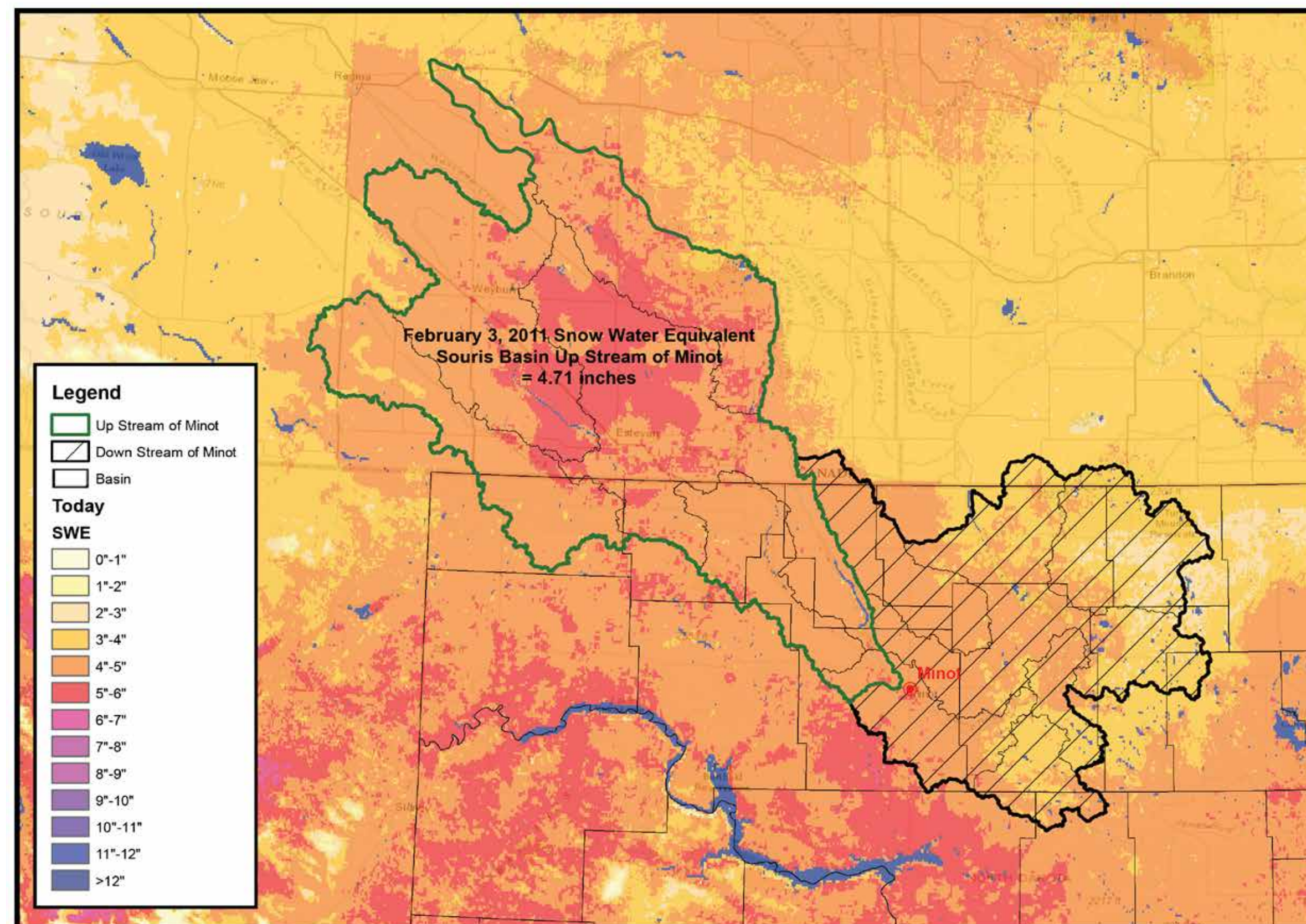
SNOWPACK

There are four factors to consider when assessing the risk of spring flooding. Those factors are soil conditions, *snowpack*, reservoir levels, and the long-term precipitation forecast.

2

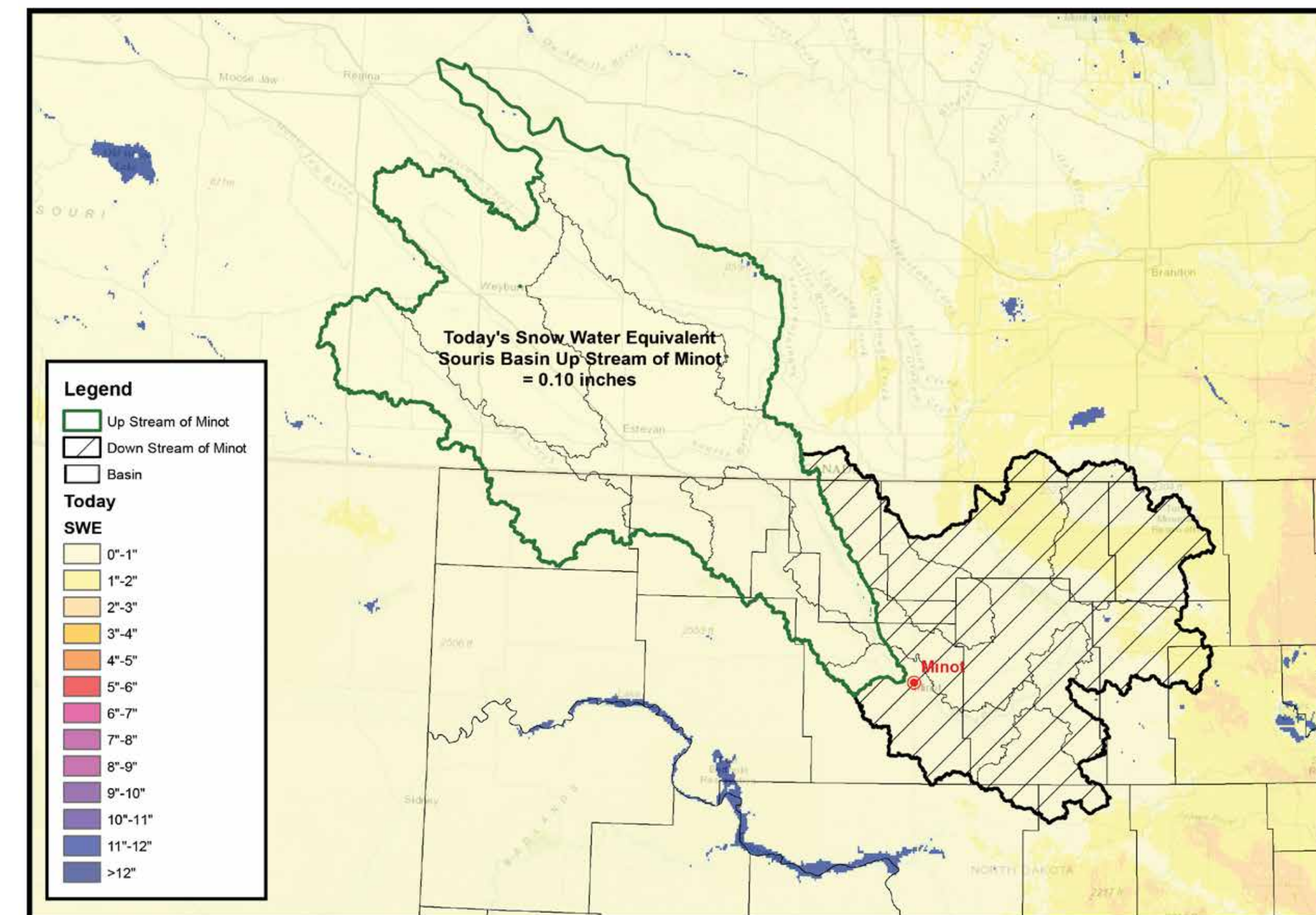
Flood Risk Factor 2 Snowpack Measures

The National Weather Service indicates the current snow water equivalent through much of the basin upstream of Minot is less than one inch, with some sections of the watershed having zero snowpack. For comparison, at this time in 2011, there was approximately 4.7 inches of water equivalent throughout the watershed upstream of Minot. Due to the modest amounts of snow water equivalent on the ground, there is a reduced risk of runoff potential.



NOAA Snow Water Equivalent
February 03, 2011

Snow Water Equivalent
February 3, 2011



NOAA Snow Water Equivalent
February 03, 2020

Snow Water Equivalent
February 3, 2020

2011

2020