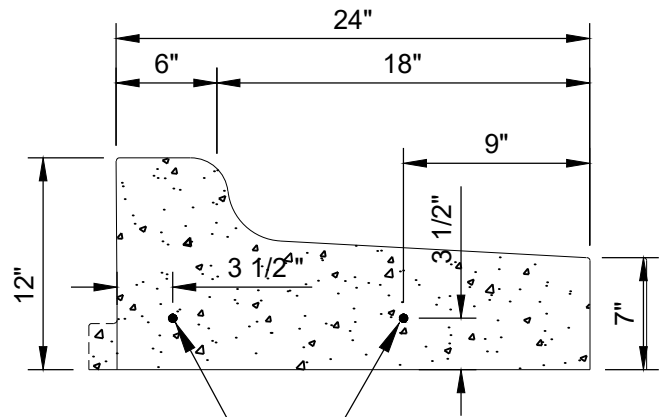


- No. 4 deformed bars if NOT using expansion material
 - 1/2" smooth dowels if using expansion material

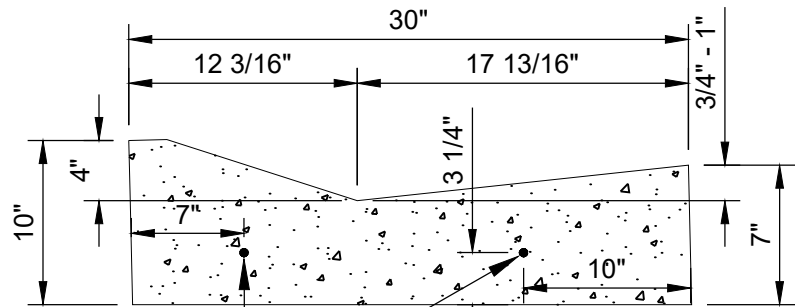
TYPE 1A (INFLOW)



- No. 4 deformed bars if NOT using expansion material
 - 1/2" smooth dowels if using expansion material

TYPE 1B (OUTFLOW)

As approved by City Engineer



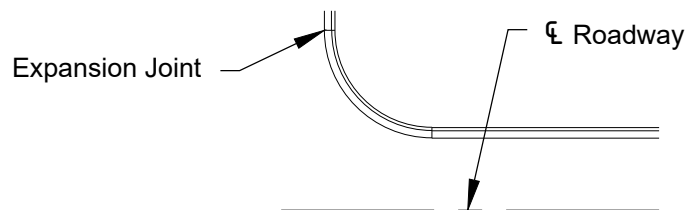
- No. 4 deformed bars if NOT using expansion material
 - 1/2" smooth dowels if using expansion material

TYPE 2 (MOUNTABLE)

As approved by City Engineer

Notes:

- Expansion joints shall be 3/4 inch wide, installed every 100 feet and as close to lot lines as possible.
- Expansion joints shall be installed at the interface of curb and gutter and gutter concrete that has been or will be poured monolithically with driveway aprons.
- Expansion joints shall be installed as shown on the plans and City Standard Details or as otherwise directed by the Engineer.
- All smooth dowels shall be greased or coated for debonding, installed perpendicular to the join, and installed parallel to adjacent dowels.



Expansion Joint

℄ Roadway

Expansion Joint

Concrete curb & gutter

EXPANSION JOINT LOCATION AT CORNER

M:\STANDARD SPECS & DETAILS\2022\Details\STR-2C_CURB AND GUTTER REINFORCEMENT FOR REPAIRS.dwg

City Plate No.:
STR-2C

Last Revision:
2/24/2022

Section:
3200

**STANDARD DETAILS
 CURB AND GUTTER
 REINFORCEMENT FOR REPAIRS**

